

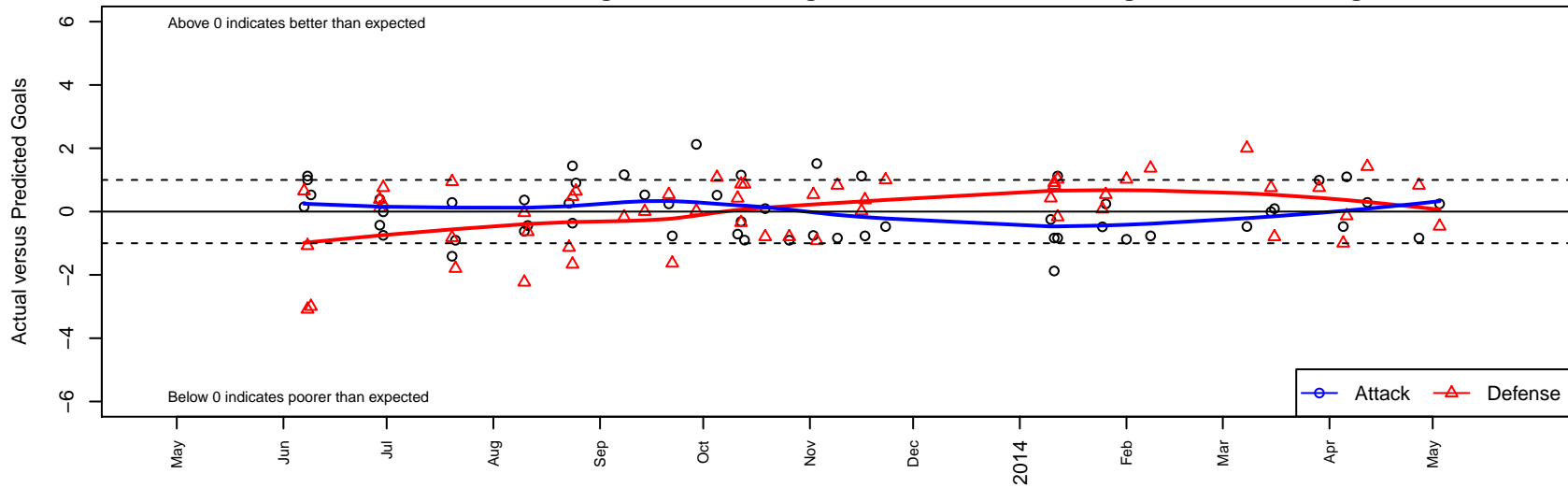
WPFC Black G00

Washington Premier FC
 Tacoma, WA
 G00 total strength=1329
 attack=5.42 defense=7.22
 fall league = RCL G00 Div 1, Spr RCL G00 Div
 alt names used:
 Washington Premier FC G00 BLACK
 WPFC G00 Black
 WASHINGTON PREMIER FC GU00 BLACK (V
 WPFC G00 Black (A)
 WPFC [Black]
 Washington Premier FC GU00B

Venues played:
 Rainier Challenge Samba U13
 RVS Classic GU13
 Nike Crossfire Challenge Gold U13
 Mustang Stampede Premier U13
 NW Champions League U13
 RCL G00 Div 1
 PacNW Winter Classic Premier U13
 Spr RCL G00 Div 1
 WYS Championship G00



WPFC Black G00
 Dots are actual minus expected GF (blue circles) and GA (red triangles).
 Blue line is smoothed change in attack strength. Red is smoothed change in defense strength.



| | date | home | | away | | venue | pred.home | pred.away |
|-------|-------------|------------------------------------|---|----------------------------|---|----------------------------------|------------------|------------------|
| 12004 | 2014-05-03 | Seattle United Copa G00 | 2 | WPFC Black G00 | 1 | WYS Championship G00 | 1.54 | 0.76 |
| 11993 | 2014-04-27 | WA Rush G00 | 0 | WPFC Black G00 | 0 | WYS Championship G00 | 0.83 | 0.83 |
| 11882 | 2014-04-12 | FC Salmon Creek Nemesis Yellow G00 | 0 | WPFC Black G00 | 1 | WYS Championship G00 | 1.42 | 0.71 |
| 11840 | 2014-04-06 | WPFC Black G00 | 3 | Washington Timbers Red G00 | 1 | WYS Championship G00 | 1.90 | 0.87 |
| 11804 | 2014-04-05 | Crossfire Premier A G00 | 3 | WPFC Black G00 | 0 | WYS Championship G00 | 2.00 | 0.47 |
| 11737 | 2014-03-29 | WPFC Black G00 | 2 | Eastside FC White G00 | 0 | WYS Championship G00 | 1.01 | 0.76 |
| 11670 | 2014-03-16 | SSC Shadow A G00 | 2 | WPFC Black G00 | 1 | Spr RCL G00 Div 1 | 1.20 | 0.91 |
| 11634 | 2014-03-15 | WPFC Black G00 | 1 | Eastside FC White G00 | 0 | Spr RCL G00 Div 1 | 1.01 | 0.76 |
| 11544 | 2014-03-08 | Crossfire Premier A G00 | 0 | WPFC Black G00 | 0 | Spr RCL G00 Div 1 | 2.00 | 0.47 |
| 11233 | 2014-02-08 | Eastside FC Red G00 | 0 | WPFC Black G00 | 0 | Spr RCL G00 Div 1 | 1.37 | 0.77 |
| 11204 | 2014-02-01 | WPFC Black G00 | 0 | PacNW Maroon G00 | 0 | Spr RCL G00 Div 1 | 0.88 | 1.02 |
| 11186 | 2014-01-26 | WPFC Black G00 | 1 | Seattle United Copa G00 | 1 | Spr RCL G00 Div 1 | 0.76 | 1.54 |
| 11173 | 2014-01-25 | NWN Red G00 | 1 | WPFC Black G00 | 0 | Spr RCL G00 Div 1 | 1.08 | 0.48 |
| 11104 | 2014-01-12 | PacNW Maroon G00 | 0 | WPFC Black G00 | 2 | PacNW Winter Classic Premier U13 | 1.02 | 0.88 |
| 11106 | 2014-01-12 | WPFC Black G00 | 0 | WA Rush G00 | 1 | PacNW Winter Classic Premier U13 | 0.83 | 0.83 |
| 11087 | 2014-01-11 | WA Rush G00 | 0 | WPFC Black G00 | 0 | PacNW Winter Classic Premier U13 | 0.83 | 0.83 |
| 11090 | 2014-01-11 | WPFC Black G00 | 0 | LWPFC White Piranhas G00 | 0 | PacNW Winter Classic Premier U13 | 1.88 | 0.91 |
| 11068 | 2014-01-10 | WPFC Black G00 | 2 | ISC Gunners A G00 | 0 | PacNW Winter Classic Premier U13 | 2.25 | 0.43 |
| 10898 | 2013-11-23 | WPFC Black G00 | 0 | Crossfire Premier A G00 | 1 | RCL G00 Div 1 | 0.47 | 2.00 |
| 10848 | 2013-11-17 | Eastside FC Red G00 | 1 | WPFC Black G00 | 0 | RCL G00 Div 1 | 1.37 | 0.77 |
| 10806 | 2013-11-16 | PacNW Maroon G00 | 1 | WPFC Black G00 | 2 | RCL G00 Div 1 | 1.02 | 0.88 |
| 10714 | 2013-11-09 | WPFC Black G00 | 0 | WA Rush G00 | 0 | RCL G00 Div 1 | 0.83 | 0.83 |
| 10638 | 2013-11-03 | NWN Red G00 | 2 | WPFC Black G00 | 2 | RCL G00 Div 1 | 1.08 | 0.48 |
| 10579 | 2013-11-02 | Seattle United Copa G00 | 1 | WPFC Black G00 | 0 | RCL G00 Div 1 | 1.54 | 0.76 |
| 10424 | 2013-10-26 | SSC Shadow A G00 | 2 | WPFC Black G00 | 0 | RCL G00 Div 1 | 1.20 | 0.91 |
| 10282 | 2013-10-19 | WPFC Black G00 | 1 | SSC Shadow A G00 | 2 | RCL G00 Div 1 | 0.91 | 1.20 |
| 10147 | 2013-10-13 | WPFC Black G00 | 1 | Washington Timbers Red G00 | 0 | NW Champions League U13 | 1.90 | 0.87 |
| 10043 | 2013-10-12 | WPFC Black G00 | 3 | Wenatchee Fire Black G00 | 1 | NW Champions League U13 | 1.85 | 0.65 |

| | date | home | | away | | venue | pred.home | pred.away |
|-------|-------------|---------------------------------------|---|------------------------------------|---|-----------------------------------|------------------|------------------|
| 10049 | 2013-10-12 | WPFC Black G00 | 1 | THUSC Silver G00 | 0 | NW Champions League U13 | 1.31 | 0.87 |
| 9993 | 2013-10-11 | WPFC Black G00 | 0 | FC Salmon Creek Nemesis Yellow G00 | 1 | NW Champions League U13 | 0.71 | 1.42 |
| 9898 | 2013-10-05 | WPFC Black G00 | 1 | NWN Red G00 | 0 | RCL G00 Div 1 | 0.48 | 1.08 |
| 9780 | 2013-09-29 | WPFC Black G00 | 3 | PacNW Maroon G00 | 1 | RCL G00 Div 1 | 0.88 | 1.02 |
| 9634 | 2013-09-22 | WPFC Black G00 | 0 | Eastside FC Red G00 | 3 | RCL G00 Div 1 | 0.77 | 1.37 |
| 9577 | 2013-09-21 | WPFC Black G00 | 1 | Seattle United Copa G00 | 1 | RCL G00 Div 1 | 0.76 | 1.54 |
| 9412 | 2013-09-14 | Crossfire Premier A G00 | 2 | WPFC Black G00 | 1 | RCL G00 Div 1 | 2.00 | 0.47 |
| 9317 | 2013-09-08 | WA Rush G00 | 1 | WPFC Black G00 | 2 | RCL G00 Div 1 | 0.83 | 0.83 |
| 9057 | 2013-08-25 | Surrey United BCSPL 2001G | 0 | WPFC Black G00 | 3 | NW Champions League U13 | 0.64 | 2.10 |
| 9007 | 2013-08-24 | Crossfire OR LOSC Blue 1 G00 | 0 | WPFC Black G00 | 2 | NW Champions League U13 | 0.47 | 2.37 |
| 9015 | 2013-08-24 | Coquitlam Metro Ford Destroyers 2001G | 2 | WPFC Black G00 | 5 | NW Champions League U13 | 0.34 | 3.56 |
| 8978 | 2013-08-23 | Eastside Timbers Red G00 | 2 | WPFC Black G00 | 1 | NW Champions League U13 | 0.87 | 0.74 |
| 8778 | 2013-08-11 | De Anza Force Jr ECNL G00 | 1 | WPFC Black G00 | 0 | Mustang Stampede Premier U13 | 0.36 | 0.44 |
| 8727 | 2013-08-10 | Santa Rosa United Riptide G00 | 1 | WPFC Black G00 | 1 | Mustang Stampede Premier U13 | 0.97 | 0.63 |
| 8735 | 2013-08-10 | WPFC Black G00 | 0 | Placer United 01 Red G00 | 4 | Mustang Stampede Premier U13 | 0.62 | 1.77 |
| 8432 | 2013-07-21 | SSC Shadow A G00 | 3 | WPFC Black G00 | 0 | Nike Crossfire Challenge Gold U13 | 1.20 | 0.91 |
| 8383 | 2013-07-20 | WPFC Black G00 | 0 | Whatcom FC Rangers Gold G00 | 0 | Nike Crossfire Challenge Gold U13 | 1.41 | 0.95 |
| 8384 | 2013-07-20 | San Juan SC 01 Spirits Blue G00 | 2 | WPFC Black G00 | 1 | Nike Crossfire Challenge Gold U13 | 1.18 | 0.71 |
| 8190 | 2013-06-30 | WPFC Black G00 | 2 | Kitsap Pumas G00 | 0 | RVS Classic GU13 | 2.75 | 0.23 |
| 8194 | 2013-06-30 | Eastside FC White G00 | 0 | WPFC Black G00 | 1 | RVS Classic GU13 | 0.76 | 1.01 |
| 8165 | 2013-06-29 | Eastside FC Grey G00 | 0 | WPFC Black G00 | 6 | RVS Classic GU13 | 0.11 | 5.61 |
| 8167 | 2013-06-29 | WPFC Black G00 | 3 | RV Slammers Orange G00 | 0 | RVS Classic GU13 | 3.43 | 0.38 |
| 7908 | 2013-06-09 | Crossfire Premier A G00 | 5 | WPFC Black G00 | 1 | Rainier Challenge Samba U13 | 2.00 | 0.47 |
| 7881 | 2013-06-08 | WPFC Black G00 | 3 | Crossfire Premier B G00 | 2 | Rainier Challenge Samba U13 | 2.00 | 0.92 |
| 7888 | 2013-06-08 | LWPFC White Piranhas G00 | 4 | WPFC Black G00 | 3 | Rainier Challenge Samba U13 | 0.91 | 1.88 |
| 7879 | 2013-06-07 | Wenatchee Fire Black G00 | 0 | WPFC Black G00 | 2 | Rainier Challenge Samba U13 | 0.65 | 1.85 |